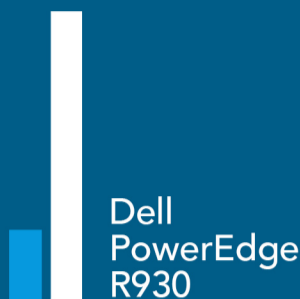


GAIN DATABASE PERFORMANCE AND ROOM FOR GROWTH

WITH DELL™ POWEREDGE™ R930 SERVERS

Accelerate your OLTP database workloads


Up to
4.2X
the database
transactions per
minute



versus a Dell PowerEdge R910 server
running Microsoft® SQL Server® 2008 R2

The Dell PowerEdge R930

features the latest Intel® Xeon® processor E7 v3 series, and provides ample compute power for your virtualization, analytics, and database needs.

96 

96 DDR4 DIMM slots

accommodate additional smaller-capacity DIMMs for potential cost savings. Supports up to 6 TB of RAM for more memory-intensive use cases.

24 

24 drive bays

so you can configure your PowerEdge R930 to meet your storage and I/O needs with a mix of SAS/SATA HDDs and SSDs—and optional PCIe® SSDs.

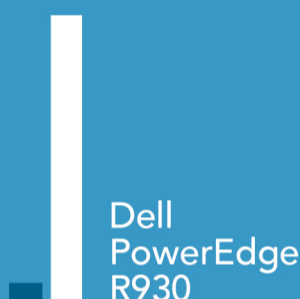
PCIe 

Optional PCIe SSD NVMe drive chassis

for the fastest-available I/O throughput. Offload your most-accessed data to PCIe or use these drives with a caching solution to accelerate your business workloads.

Get analytics workload results faster

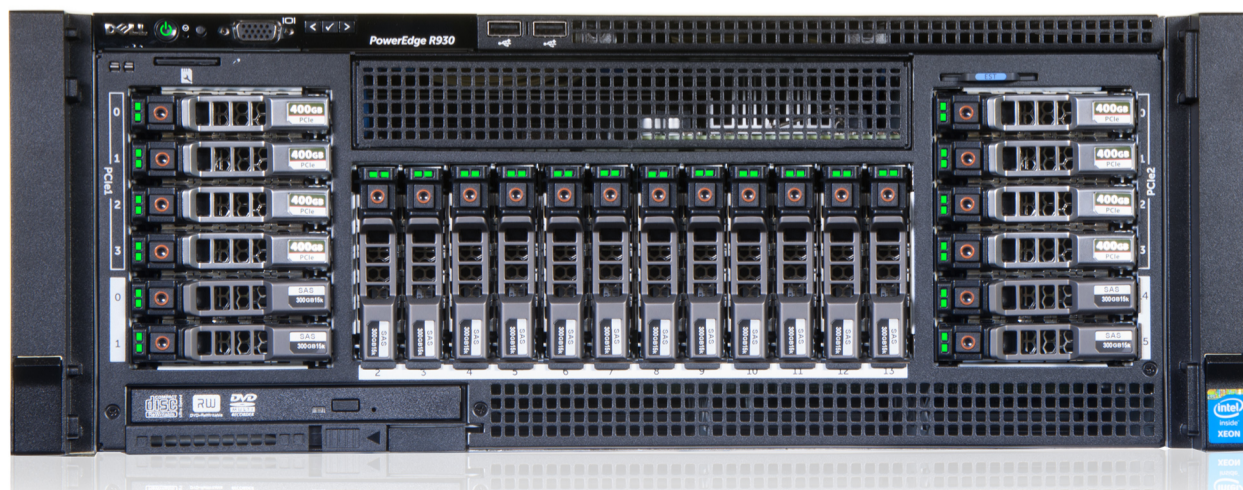
Nearly
14X
the analytics
performance



versus a Dell PowerEdge R710 server
running Microsoft SQL Server 2008 R2

Get the storage performance you need

Up to
11.1X
the performance of
the all-HD configuration



POWERED BY THE INTEL XEON PROCESSOR E7-8800 V3 FAMILY

Get all the facts at <http://facts.pt/1JPYgfU>

Copyright 2015 Principled Technologies, Inc. Based on "Dell PowerEdge R930 with Oracle: The benefits of upgrading to PCIe storage using SanDisk DAS Cache," a Principled Technologies report, June 2015, "Improving performance with in-memory SQL Server 2014 database features on the Dell PowerEdge R930," a Principled Technologies report, May 2015, and "Consolidate SAS 9.4 workloads with Intel Xeon processor E7 v3 and Intel SSD technology," a Principled Technologies report, April 2015. Principled Technologies® is a registered trademark of Principled Technologies, Inc. All other product names are the trademarks of their respective owners.

